



RETHINK UNDERWATER DEFENCE



GREYSHARK™

GREYSHARK™ extends your capabilities far beyond previous planning

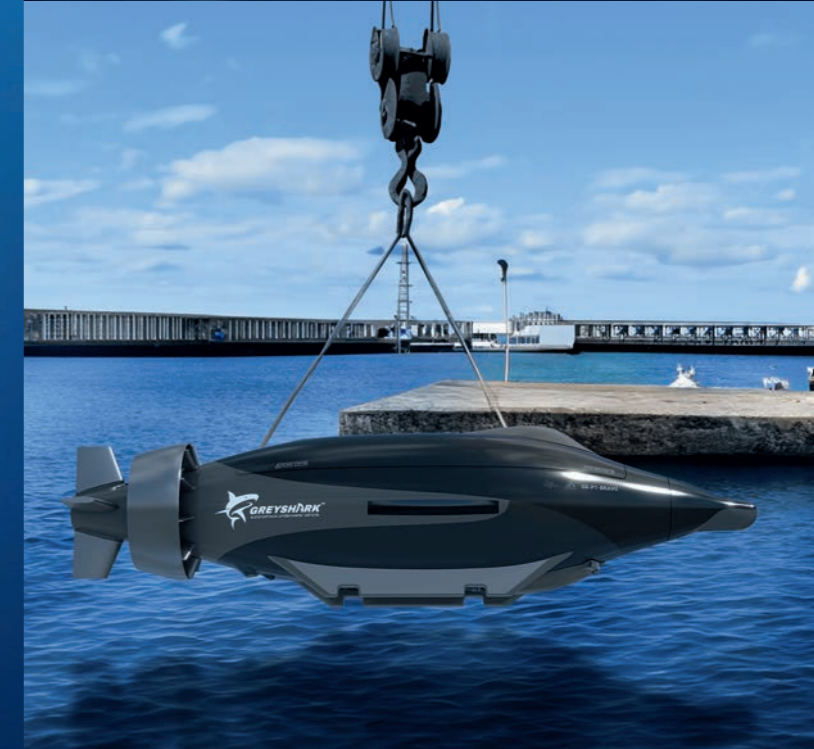
Combine comprehensive advanced sensors and a complete autonomous behavior over long distances. Expand the sensor coverage through swarm capabilities. Embed GREYSHARK™ in complex mission scenarios and battle tactics.

Fully integrate GREYSHARK™ into your battle management systems through live data connectivity.

Areas of application

- Blue & brown water
- Unmanned long-range missions
- Ship drop & slipping for port-to-port
- Recognition and identification
- Target illumination
- Deterrence through presence
- Deterrence through identification
- Critical Infrastructure Monitoring
- Over-the-horizon Reconnaissance
- Channel Clearing
- Mine Warfare +

10
units in
a swarm



Deterrence through presence

Patrol and protect a critical sea area with single or multiple GREYSHARK™. Make them hold their position passively on the seabed and activate at critical events, e.g., the identification of a specific vessel.

Define smart behaviors for your GREYSHARK™. Have them approach targets under active sensors, or quietly withdraw and report.

Deterrence through identification

Identify vessels with your GREYSHARK™ passive sensors, sensor fusion and A.I. systems. Analyze vessel movements and traffic in an area. Track individual vessels and even follow them.

400
meter wide route during scan mode



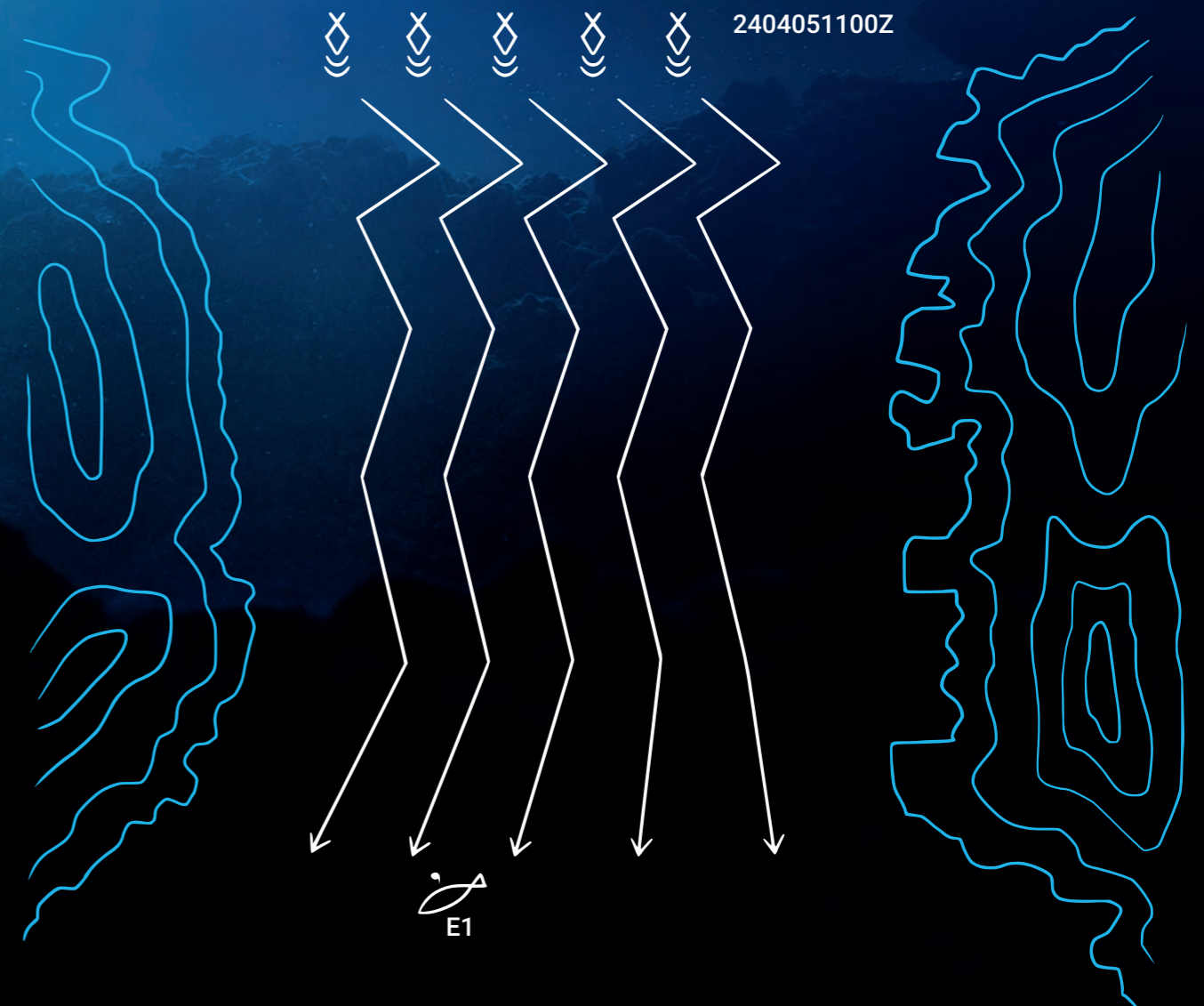
Illumination

Employ single GREYSHARK™ or a swarm for sonar illumination. Extend the sensor range of your manned underwater vessels and keep them passive, yet informed.

During operation, GREYSHARK™ reports all identified targets via encrypted underwater communication to other GREYSHARK™, own vessels and, if appropriate, to situational awareness systems.

Channel clearing

Scare away enemy reconnaissance with a swarm of GREYSHARK™ searching parallel under active sensors. GREYSHARK™ will actively look for specific vessel classes, report in real-time, and follow them.



Over-the-horizon reconnaissance

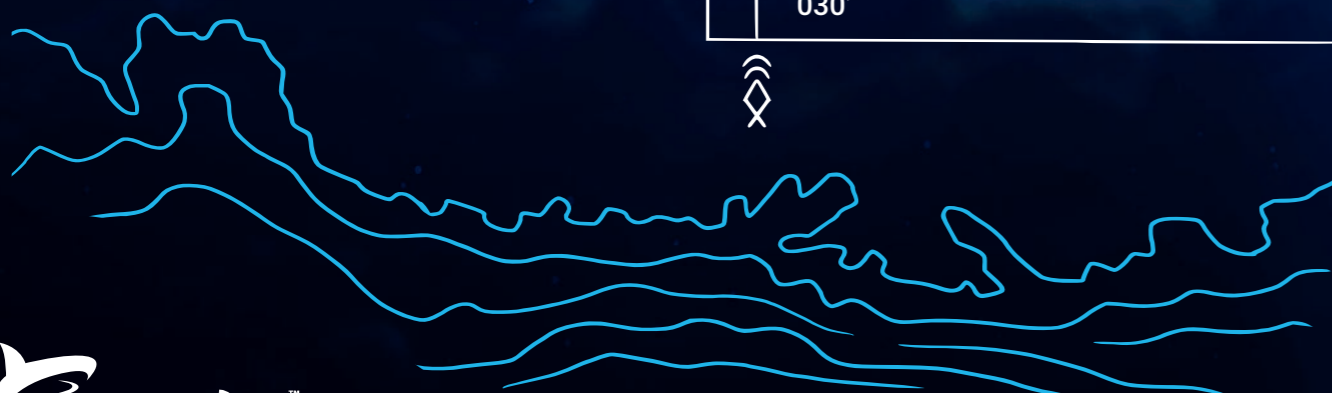
Send GREYSHARK™ into a defined area and identify vessels, objects, structures, sensors and effectors according to random or fixed search patterns. Chose to receive reports directly upon detection, after completion of the search area or only after return, as required by your mission.



Mine warfare +

Identify mines with active sensors (sonar, LIDAR, camera, electromagnetic) and A.I. based

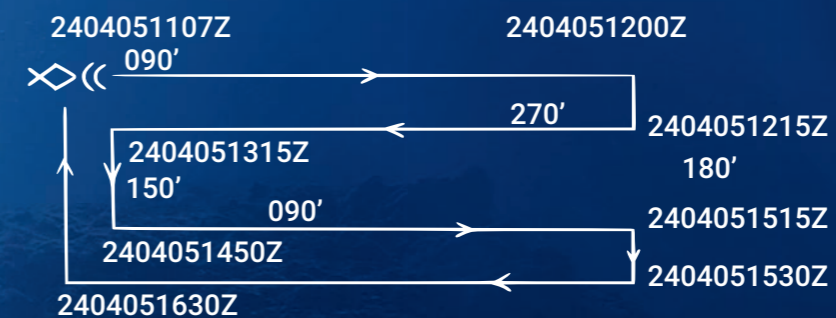
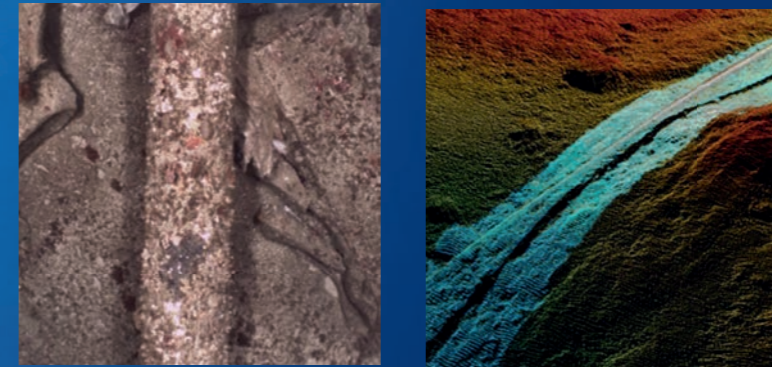
Automatic Target Recognition. GREYSHARK™ has excellent MCMV characteristics, including a silent electric propulsion system, a non-metallic, non-pressurized hull structure and a very low own sonar signature.



Monitor critical infrastructure

Use GREYSHARK™ to monitor known underwater structures, harbors, cables, pipelines. Track security risk with a sensor fusion of LIDAR, camera, sonar and electromagnetic sensors. Powerful change detection algorithms speed up regular patrols.

GREYSHARK™ will follow the infrastructure and deliver more data than classic sensors. No surface vessel is needed to deploy inspection underwater AUVs. The results can be passed on directly during the deployment and after the return.



2.7
km² each hour
by one unit

The future of underwater defence

Utilizing advanced artificial intelligence, sensor fusion and groundbreaking innovations within robotics and fuel-cell technology, your GREYSHARK™ will be a cornerstone in future unmanned underwater defence.

Specifications

Depth Rating: 650 m (Step 2: 4000 m)
Range: 1100 Nm
Speed: 10 Kts cruise
Length: 5.5 m
Diameter: 1.5 m
Weight: 3500 kg

Sensors Active

- Multi Beam
- Side Scan Sonar
- Synthetic Aperture Sonar
- LIDAR
- USBL
- DVL
- FOG-INS

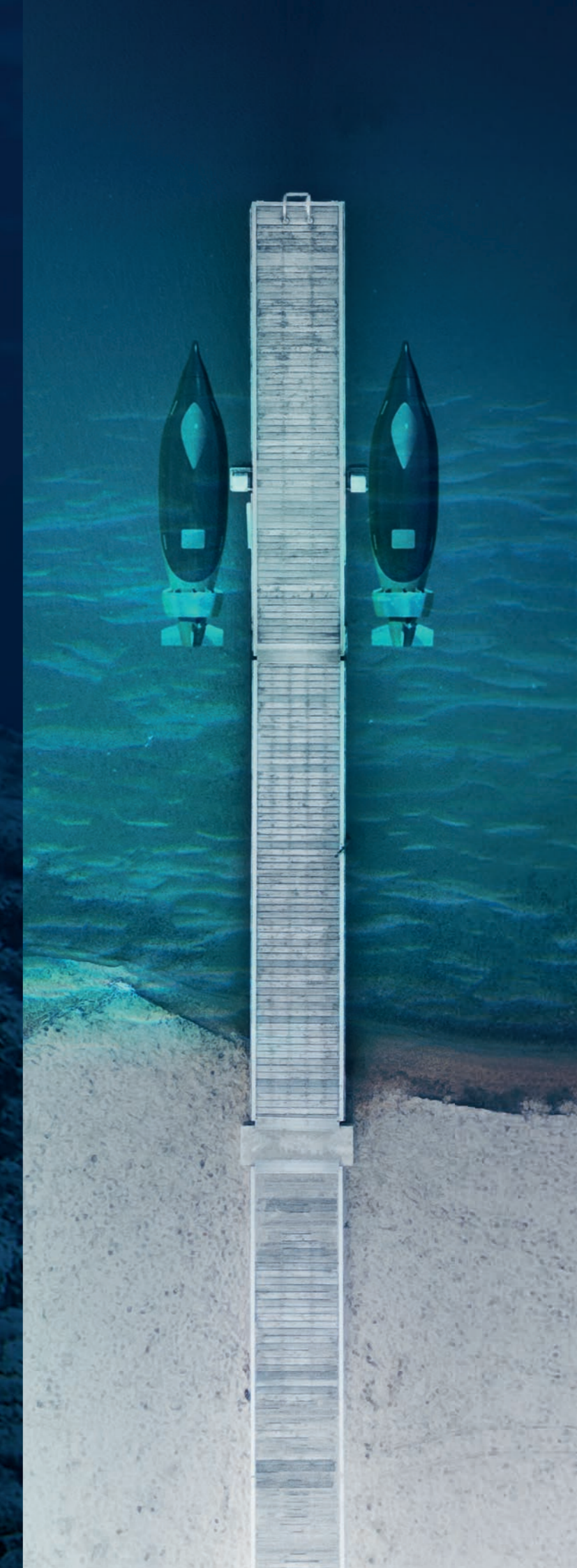
Sensor Passive

- GPS (Anti-Jam)
- Electromagnetic Sensor Array
- AI Camera
- Side Scan Sonar
- Synthetic Aperture Sonar

Communication

- Hydro acoustic Modem
- Streamcast
- Iridium
- Starlink

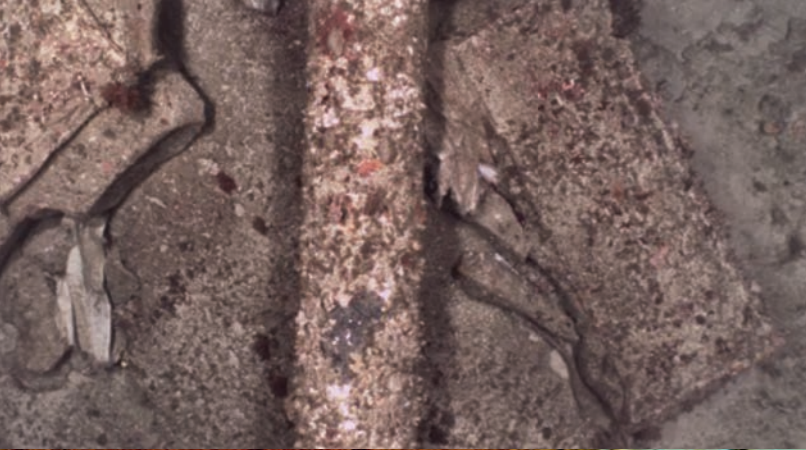
Potential Areas





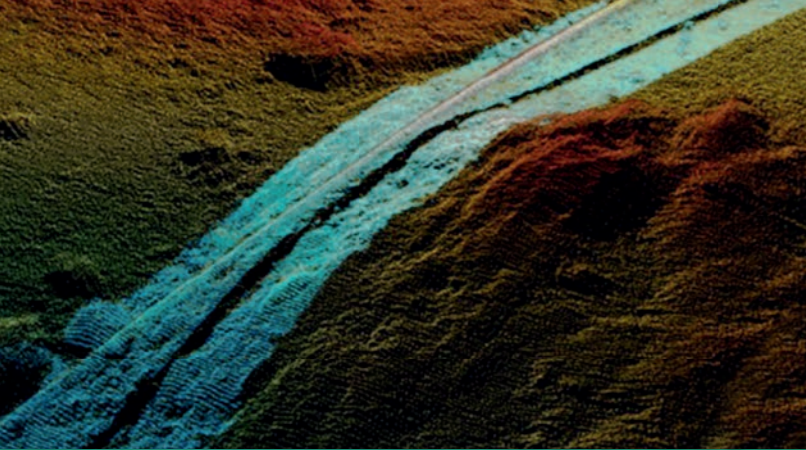
AI Vision

Real time object recognition.



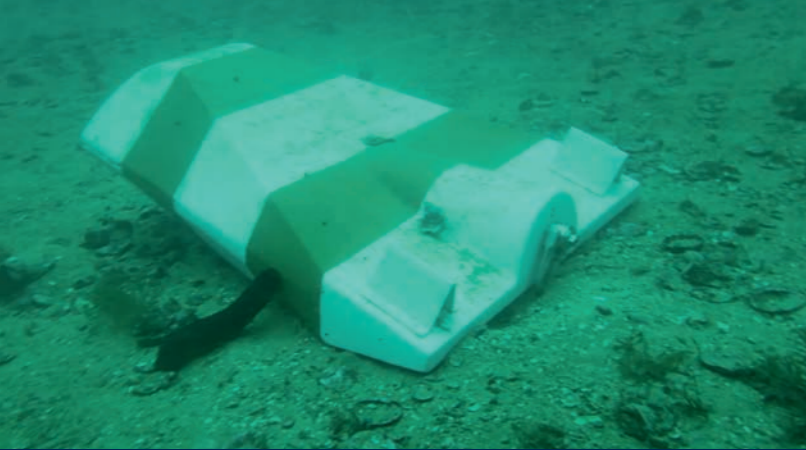
SONAR

Synthetic Aperture Sonar (SAS)
Multibeam Sonar
Doppler Velocity Log (DVL)



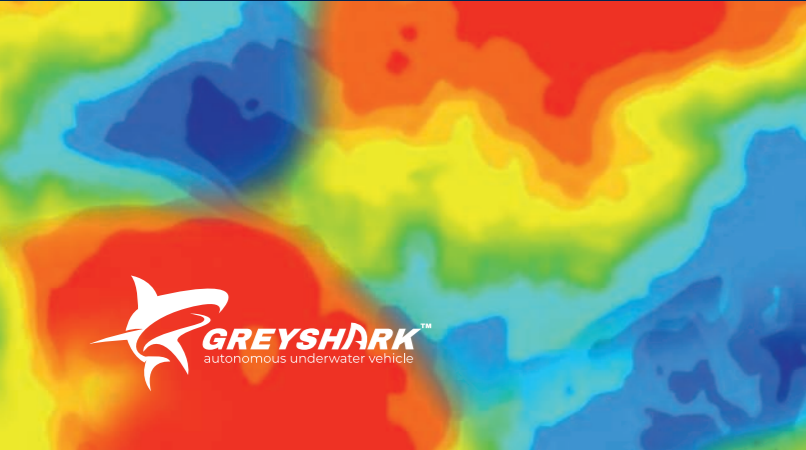
LIDAR

Underwater Laser with change
detection system



CAMERA

Underwater camera system
with lighting



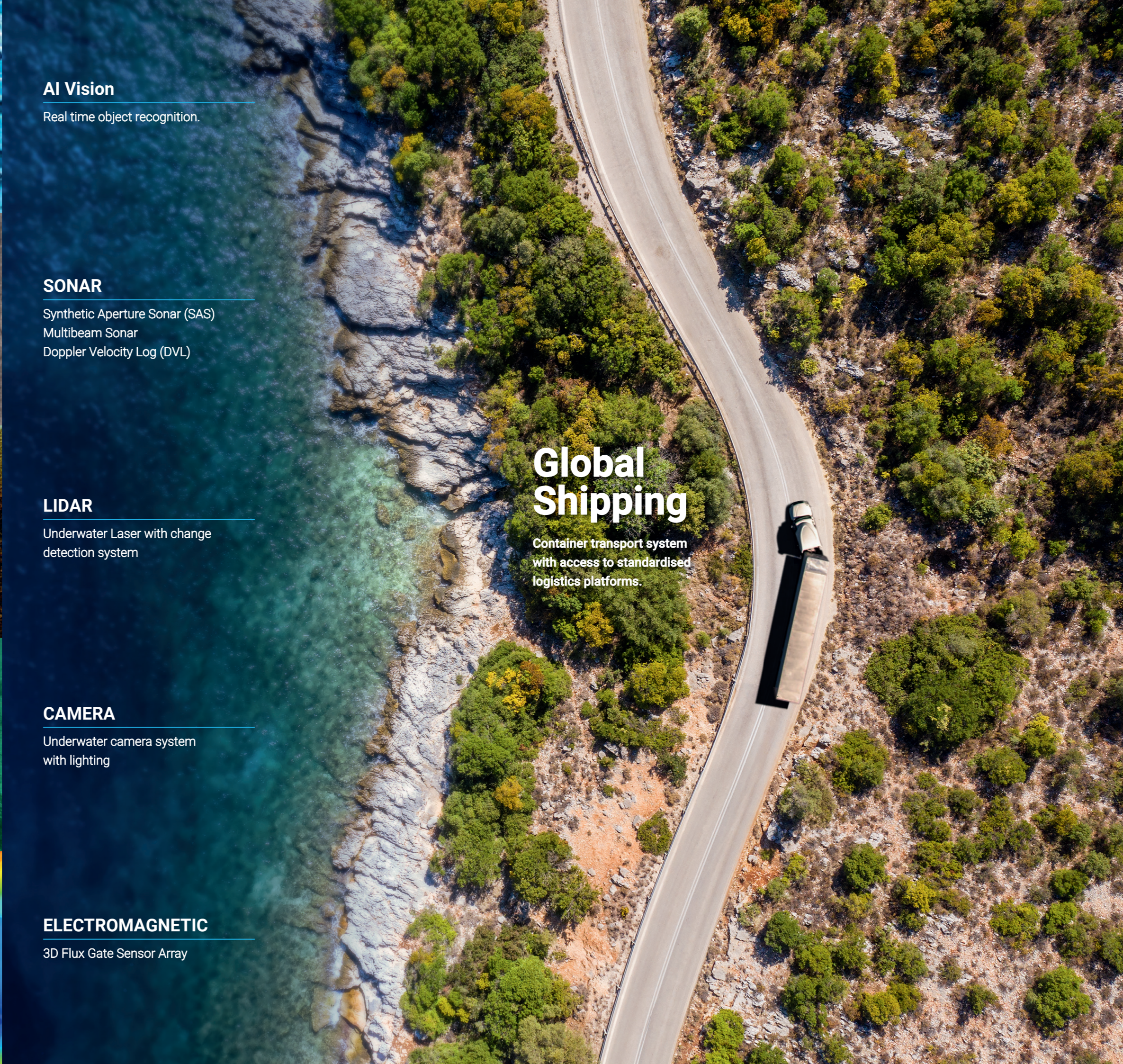
ELECTROMAGNETIC

3D Flux Gate Sensor Array



Global Shipping

Container transport system
with access to standardised
logistics platforms.





Zum Panrepel 2
28307 Bremen | Germany
Phone: +49 421 48693 0
E-Mail: sales@euroatlas.com
Web: www.euroatlas.com

Evo
Logics

Wagner-Régeny-Str. 4
12489 Berlin | Germany
Phone: +49 30 4679 862 0
E-Mail: sales@evologics.com
Web: www.evologics.com